



SPREAD
THE JOY

Tinsel Tableware

Agleam cutlery and napkin holders give meals a metallic magic

CLOCKWISE, FROM TOP LEFT "RONDO" GOLD FINISH CUTLERY by Cutipol from Le Mill, ₹900 each onwards SILVER FINISH EMBOSSED NAPKIN RING from Baaya Design, ₹735 (set of six) "LATTICE" SILVER FINISH CASTED NAPKIN RING by Mukul Goyal from Pallate, ₹2,090 (set of six) YELLOW CERAMIC NAPKIN RING from Contemporary Arts & Crafts, ₹200 (set of four) ANTIQUE COPPER FINISH FORKS from Tranceforme, price on request "EDEN" GOLD FINISH NAPKIN RING from Kingchest.com, ₹2,259 (set of six) "ANTIQUÉ FINISH ELEPHANT NAPKIN RING" from Mozaic, ₹685 (set of six) Photography by Indrajit Sathe. Produced by Priyanka Kedare. For details, see Address Book

SPREAD
THE JOY



Glam Glassware

See throughs and translucent lines to help you ogle at your treats

FROM LEFT "EDELWEISS" RED WINE GLASS from Mozaic, ₹5,900 (set of six) "SMILE" DECANTER from Elvy Lifestyle, ₹10,304 YELLOW ACRYLIC WATER GLASS by Rosti Mepal from Home Collective, ₹240 "TIPSY" GLASS from Tappu Ki Dukaan, ₹2,099 (set of six) "OPTIMUM" DECANTER from FCML Home, ₹8,550 (part of set) "FLOWER" DECANTER from Serenity, ₹950 "MELBA" WHITE WINE GLASS by Memento from Le Mill, ₹2,440 (set of two) "ROMAN" GLASS from Bungalow 8, ₹585 PURPLE "CARTOUCHE" GLASS from Goodearth, ₹4,200 (set of six)
Photography by Indrajit Sathe. Produced by Priyanka Kedare. For details, see Address Book

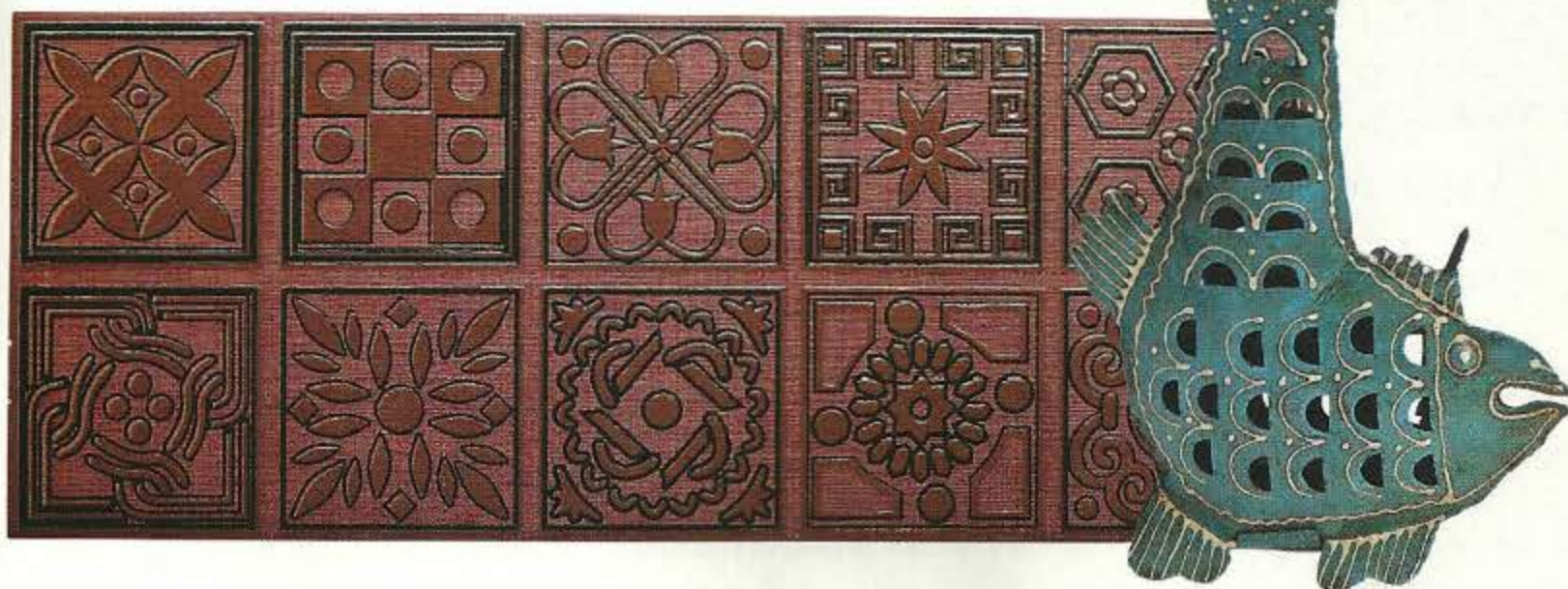


GET THE LOOK WITH A PALLETTE OF

**BURNT ORANGE + POWDER BLUE
+ MOSS GREEN + SALMON PINK**

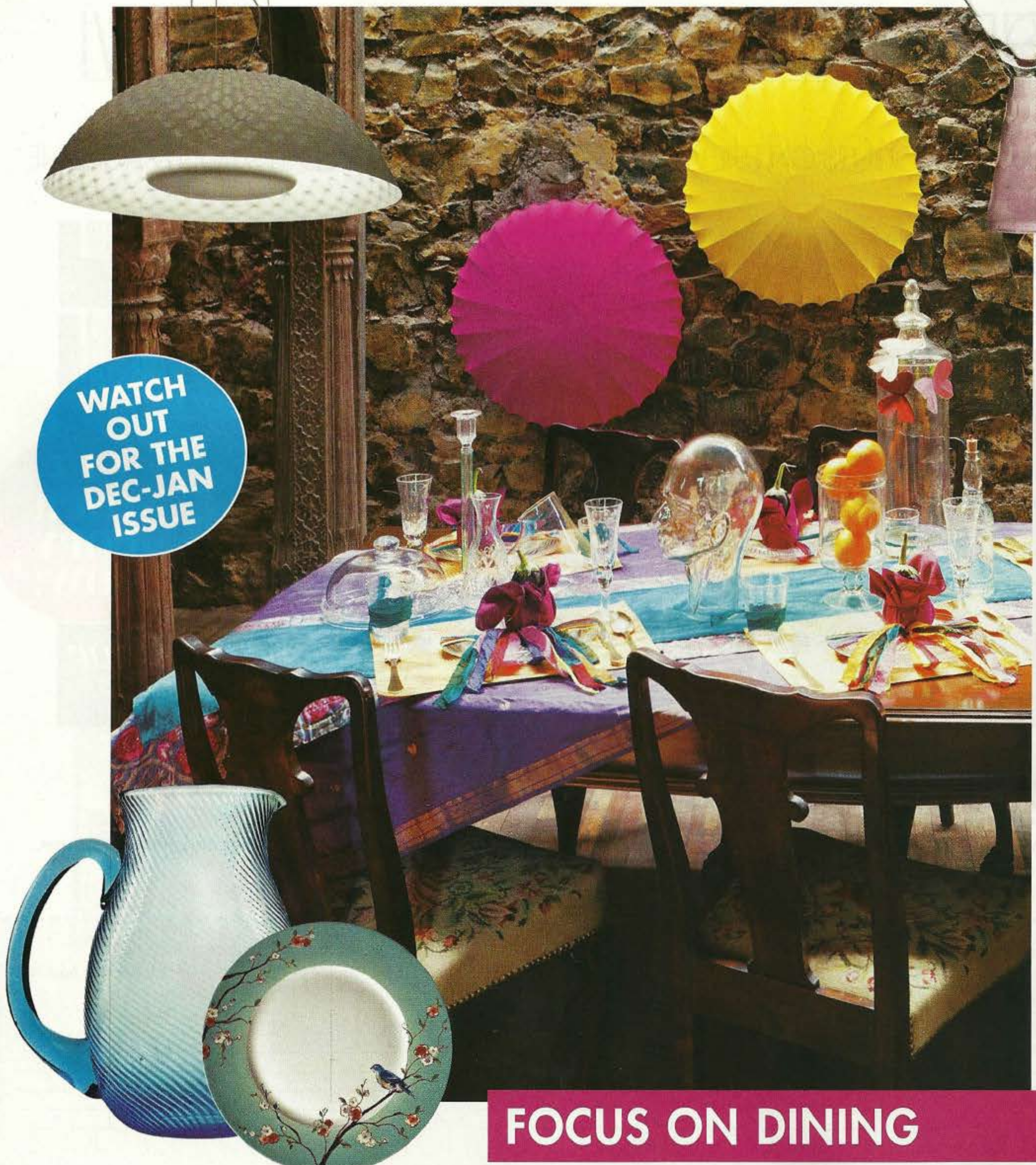
Pick patterns and tones with colonial elements for a graphic mix of global and ethnic influences – go around the world in four shades

PHOTOGRAPHY BY **ALTAF KHAN** PRODUCED BY **SHIVANI AJMERA**



CLOCKWISE, FROM TOP LEFT **TISSUE BOX** from The Shop, ₹320 **RICE BOWL** from Tranceforme, ₹1,600 (set of two) **"KALAMKARY" SERVING TRAY** from Mozaic, ₹1,250 **PAINTED SPLASHES** fabricated by stylist (**BURNT ORANGE "MOROCCAN SANDS" 30 YR 25/463** from Dulux Decorator Centre, ₹360 per ltr **POWDER BLUE "B365 (MATT)"** from Oikos, ₹365 per ltr **MOSS GREEN "EMERALD ISLE" 70 GY 11/387** from Dulux Decorator Centre, ₹330 per ltr **ROSE PINK "PRAIRIE ISLAND"** by Asian Paints from BP Shah and Company, ₹170 per ltr) **"RASA" PLATES** from Goodearth, ₹900 each onwards **CERAMIC VASE** from Red Blue Yellow, ₹1,800 **METAL FISH T-LIGHT** from Baaya Design, ₹675 onwards **CERAMIC TILE** from Belleza Decor, ₹2,650 per piece

For details, see Address Book



WATCH
OUT
FOR THE
DEC-JAN
ISSUE

FOCUS ON DINING

ELLE DECOR

IDEAS YOU CAN USE

IN THE NEXT ISSUE 'TIS THE SEASON TO PARTY! CELEBRATE OUR 12TH ANNIVERSARY AND BRING IN THE NEW YEAR WITH THE BEST OF CROCKERY, CUTLERY AND TABLEWARE. THINK HEIRLOOM, EDGY AND COUTURE. PLUS, FIND OUT WHAT'S GOING TO BE HOT IN 2013



Scooped Servers

Deep dippers and colourful functionals are the perfect pick me ups

CLOCKWISE, FROM TOP LEFT WALNUT AND ALUMINIUM SALAD SERVER from Tranceforme, ₹965 (set of two) WOODEN SERVER from Baaya Design, ₹1,875 (set of two) YELLOW SERVER by Rosti Mepal from Home Collective, ₹410 (set of two) COLOURED GLASS BOWL from Mozaic, ₹3,400 LADLE WITH TORTOISE SHELL HANDLE from Bungalow 8, ₹3,015 "LATTICE BOWL LARGE" by Mukul Goyal from Pallate, ₹1,590 SALAD SERVER from Contemporary Arts & Crafts, ₹810 (set of two) "ROSE" PORCELAIN BOWL by Vista Alegre from L'Vista, ₹3,31,500 (part of set)

Photography by Indrajit Sathe. Produced by Priyanka Kedare. For details, see Address Book